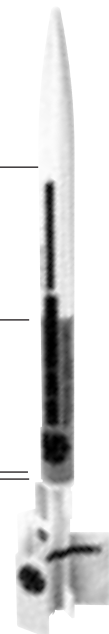
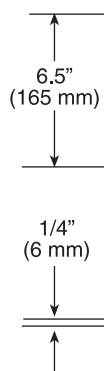
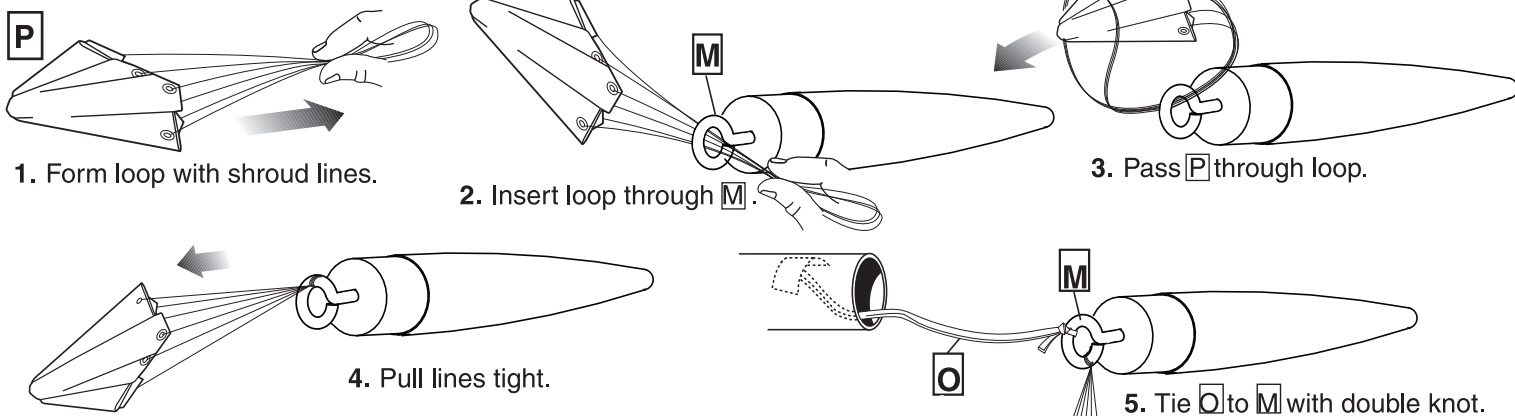


5. Hold the nose cone by the screw eye with a clip or pliers for painting.
6. We recommend a good filler/primer to be applied to the balsa fins and nose cone before painting.
7. Apply 1-2 light coats of primer to rocket body and nose cone, lightly sanding with fine sandpaper (#320 or #400 grit) between coats.
 - a. Allow to dry between each coat.
8. When satisfied with base finish, paint main rocket and nose cone gloss white (paint separately).
 - a. Let paint dry overnight (24 hours is best).
9. Measure 1/4" (6 mm) from the lower end of (F) and mark with a pencil.
10. Apply masking tape at mark and cover the lower end of the rocket.
11. Measure 6 1/2" (165 mm) from front end of rocket and mark (F) with a pencil.
12. Apply masking tape at mark and cover the front end of the rocket.
13. Spray middle section bright orange.
 - a. Let paint dry overnight (24 hours is best). Remove masking tape.
14. Apply waterslide decals where shown.
 - a. Cut the decal to be applied from the decal sheet, trimming close to the decal edge.
 - b. Hold the decal in warm water until decal begins to curl.
 - c. Remove the entire decal, position in place and slide the decal backing material from under the decal and onto the model as close to final position as possible.
 - d. Gently blot out excess water with a clean paper towel.
 - e. Allow decals to set overnight before applying protective clear coat.
15. When decals are dry, spray entire rocket (body and nose cone separately) with a light coat of Testors Gloss Lacquer (#1961). This will provide added protection and shine to your Photon Disruptor™ rocket!

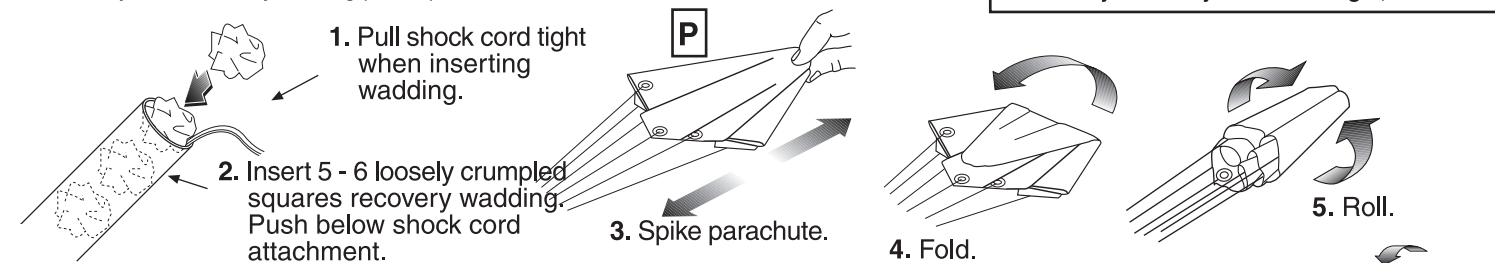


RECOVERY SYSTEM ATTACHMENT



PREPARE FLIGHT RECOVERY

NOTE: Only Estes Recovery Wadding (302274) recommended.

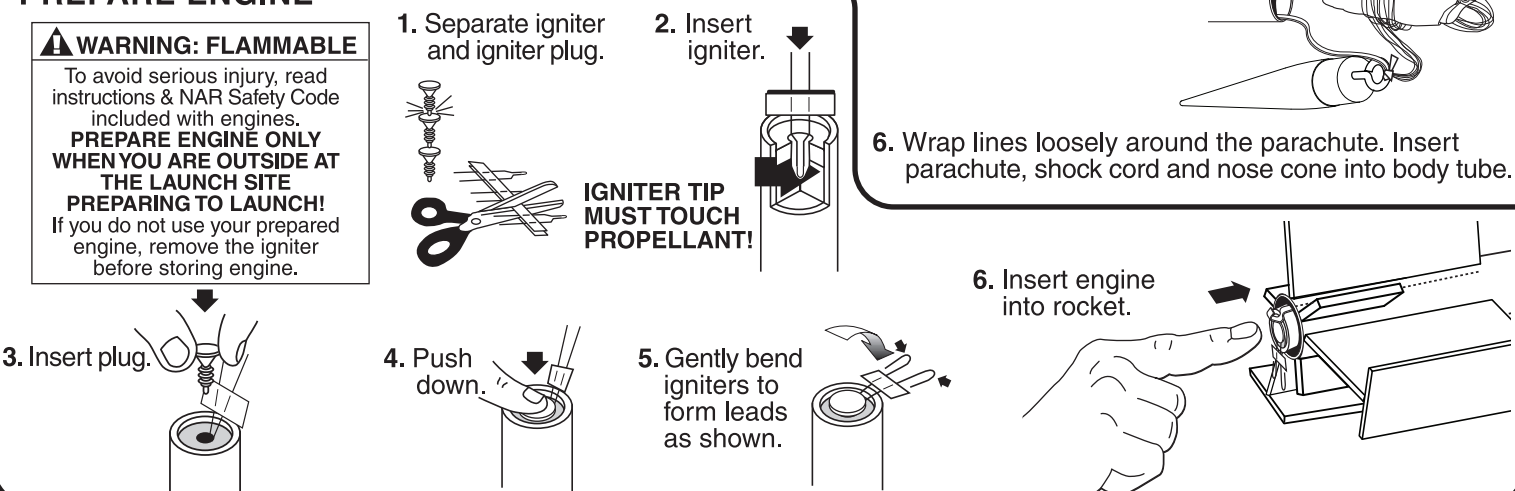


NOTE: Recovery wadding and parachute must slide easily into body tube. If too tight, redo.

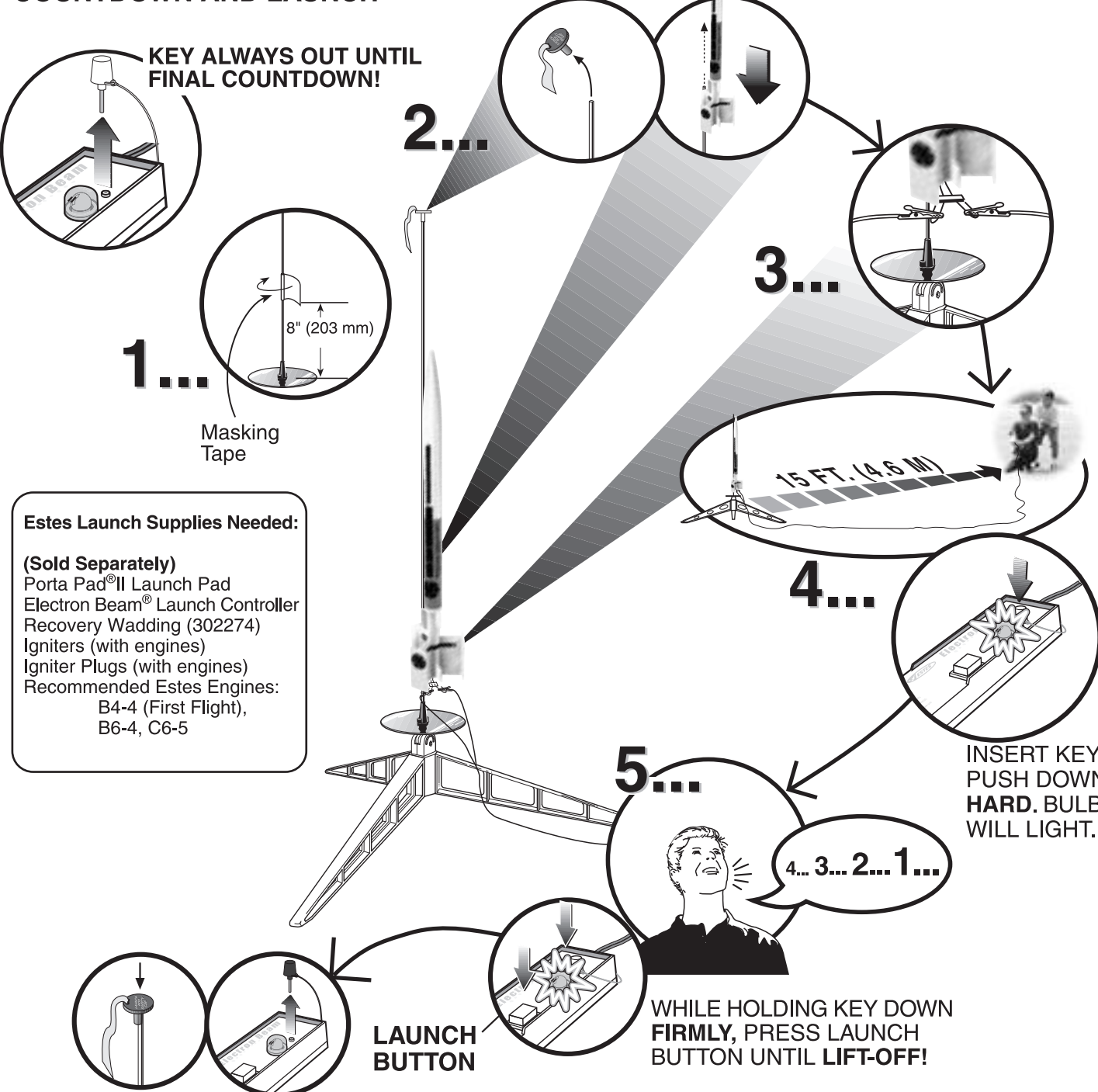
PREPARE ENGINE

WARNING: FLAMMABLE

To avoid serious injury, read instructions & NAR Safety Code included with engines.
PREPARE ENGINE ONLY WHEN YOU ARE OUTSIDE AT THE LAUNCH SITE PREPARING TO LAUNCH!
 If you do not use your prepared engine, remove the igniter before storing engine.



COUNTDOWN AND LAUNCH



Estes Launch Supplies Needed:

(Sold Separately)
 Porta Pad® II Launch Pad
 Electron Beam® Launch Controller
 Recovery Wadding (302274)
 Igniters (with engines)
 Igniter Plugs (with engines)
 Recommended Estes Engines:
 B4-4 (First Flight),
 B6-4, C6-5

PRECAUTIONS



PRE-LAUNCH CHECK

For safety, never launch a damaged rocket. Check the rocket's body, nose cone and fins. Also, check the engine mount, recovery system and launch lug. Repair any damage before launching the rocket.

FLYING YOUR ROCKET

Choose a large field (500 ft. [152 m] square) free of dry weeds and brown grass. The larger the launch area, the better your chance of recovering your rocket. Football fields and playgrounds are great. Launch only with little or no wind and good visibility.

Always follow the enclosed National Association of Rocketry (NAR) SAFETY CODE.

MISFIRES

TAKE THE KEY OUT OF THE CONTROLLER. WAIT ONE MINUTE BEFORE GOING NEAR THE ROCKET! Disconnect the igniter clips and remove the engine. Take the plug and igniter out of the engine. If the igniter has burned, it worked but did not ignite the engine because it was not touching the propellant inside the engine. Put a new igniter all the way inside the engine without bending it. Push the plug in place. Repeat the steps under Countdown and Launch.



PHOTON DISRUPTOR™

FLYING MODEL ROCKET KIT INSTRUCTIONS
 KEEP FOR FUTURE REFERENCE

#3025

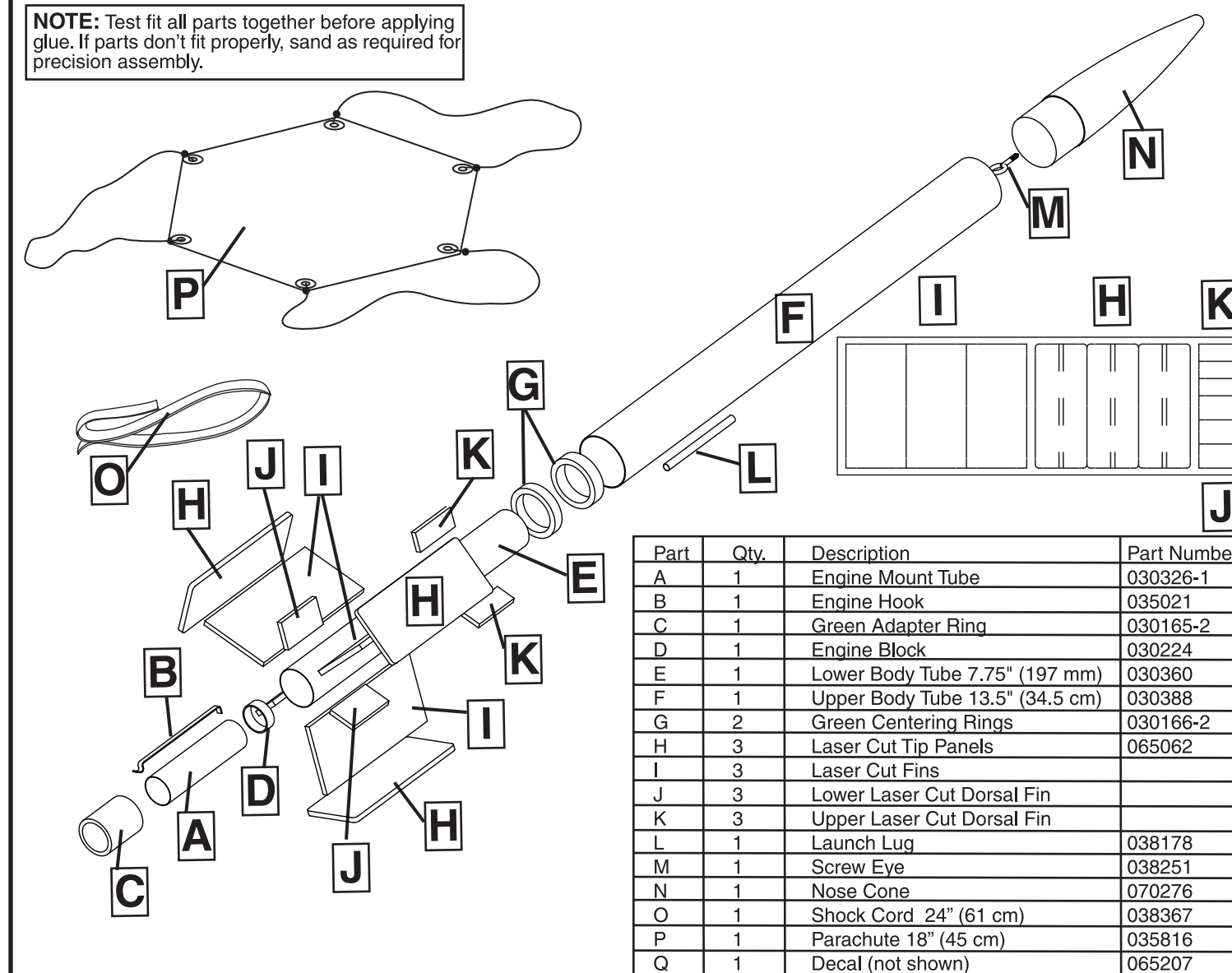
Estes-Cox Corp.
 1295 H Street, PO Box 227
 Penrose, CO 81240-0227
 Printed in China



www.
 estes
 rockets
 .com

ASSEMBLY TIP: Read all instructions before beginning work on your model. Make sure you have all parts and supplies.

NOTE: Test fit all parts together before applying glue. If parts don't fit properly, sand as required for precision assembly.



Part	Qty.	Description	Part Number
A	1	Engine Mount Tube	030326-1
B	1	Engine Hook	035021
C	1	Green Adapter Ring	030165-2
D	1	Engine Block	030224
E	1	Lower Body Tube 7.75" (197 mm)	030360
F	1	Upper Body Tube 13.5" (34.5 cm)	030388
G	2	Green Centering Rings	030166-2
H	3	Laser Cut Tip Panels	065062
I	3	Laser Cut Fins	
J	3	Lower Laser Cut Dorsal Fin	
K	3	Upper Laser Cut Dorsal Fin	
L	1	Launch Lug	038178
M	1	Screw Eye	038251
N	1	Nose Cone	070276
O	1	Shock Cord 24" (61 cm)	038367
P	1	Parachute 18" (45 cm)	035816
Q	1	Decal (not shown)	065207

SUPPLIES

In addition to the parts included in the kit you will also need:

