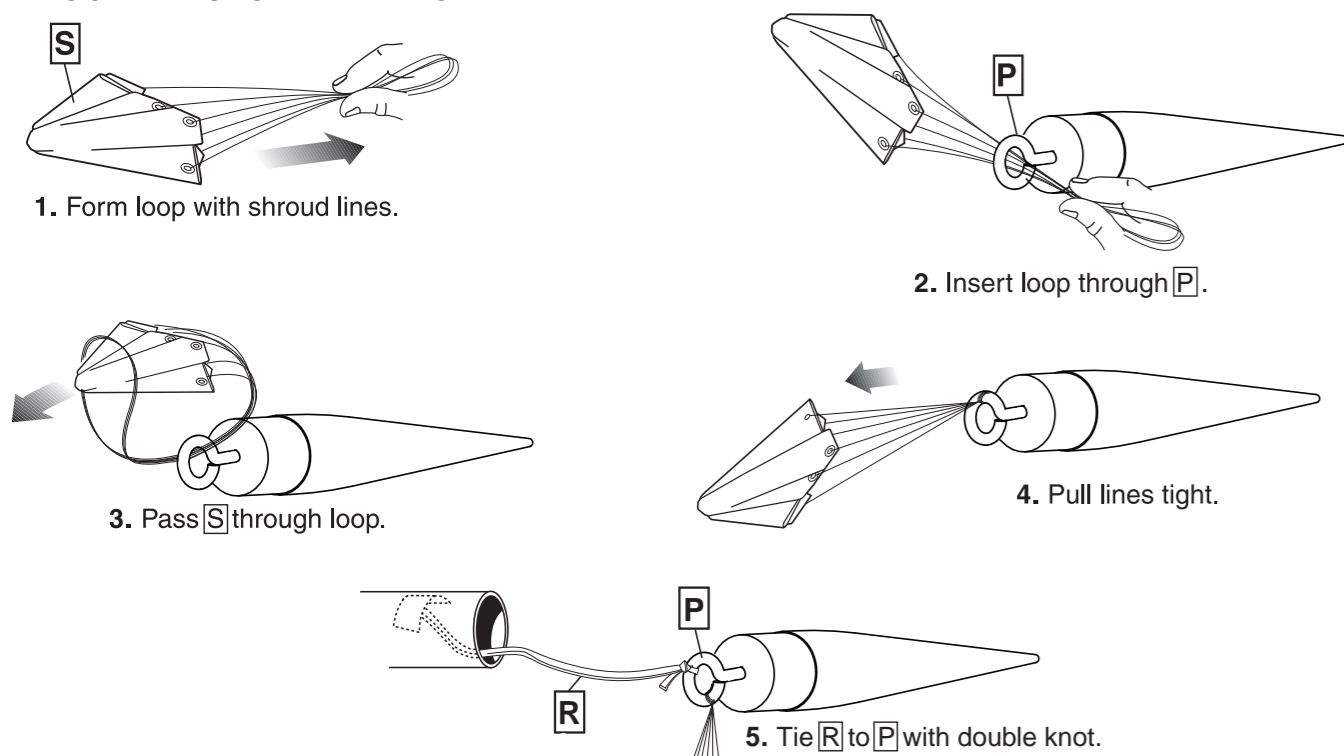


ROCKET FINISHING CONTINUED

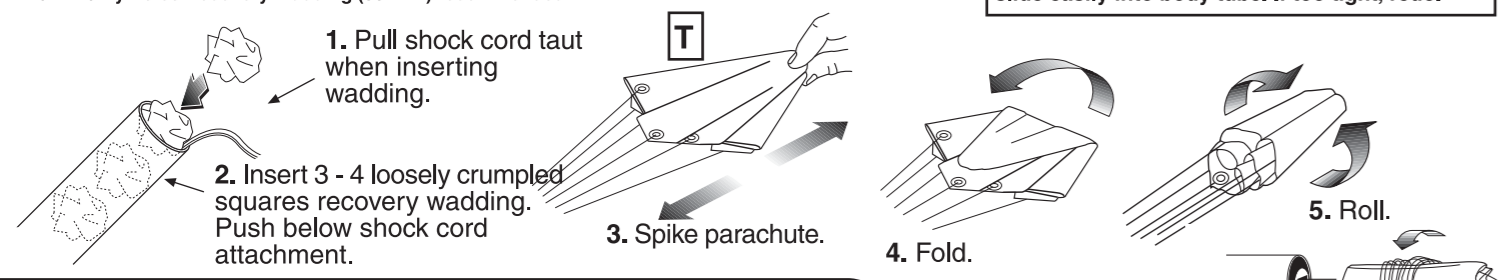
- Remove the entire decal, position in place and slide the decal backing material from under the decal and onto the model as close to final position as possible.
 - Gently blot out excess water with a clean paper towel.
 - Allow decals to set overnight before applying protective clear coat.
- When decals are dry, spray entire rocket (body and nose cone separately) with a light coat of Testors Gloss Lacquer (#1961). This will provide added protection and shine to your Satellite Interceptor™ rocket!

RECOVERY SYSTEM ATTACHMENT



PREPARE FLIGHT RECOVERY

NOTE: Only Estes Recovery Wadding (302274) recommended.

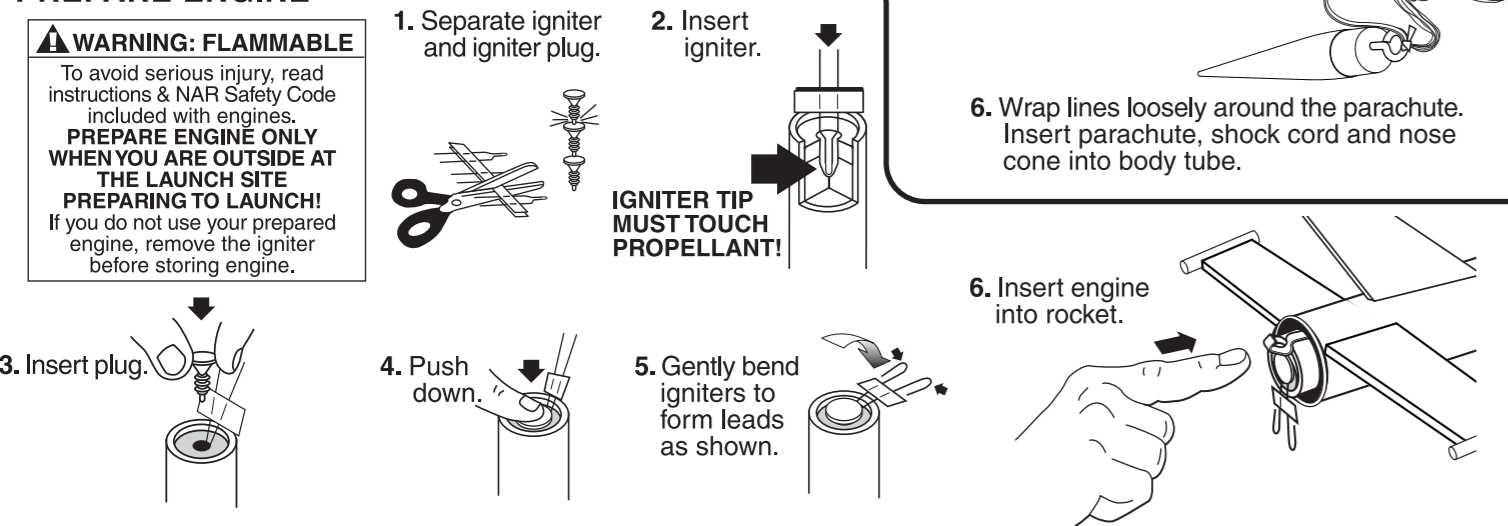


NOTE: Recovery wadding and parachute must slide easily into body tube. If too tight, redo.

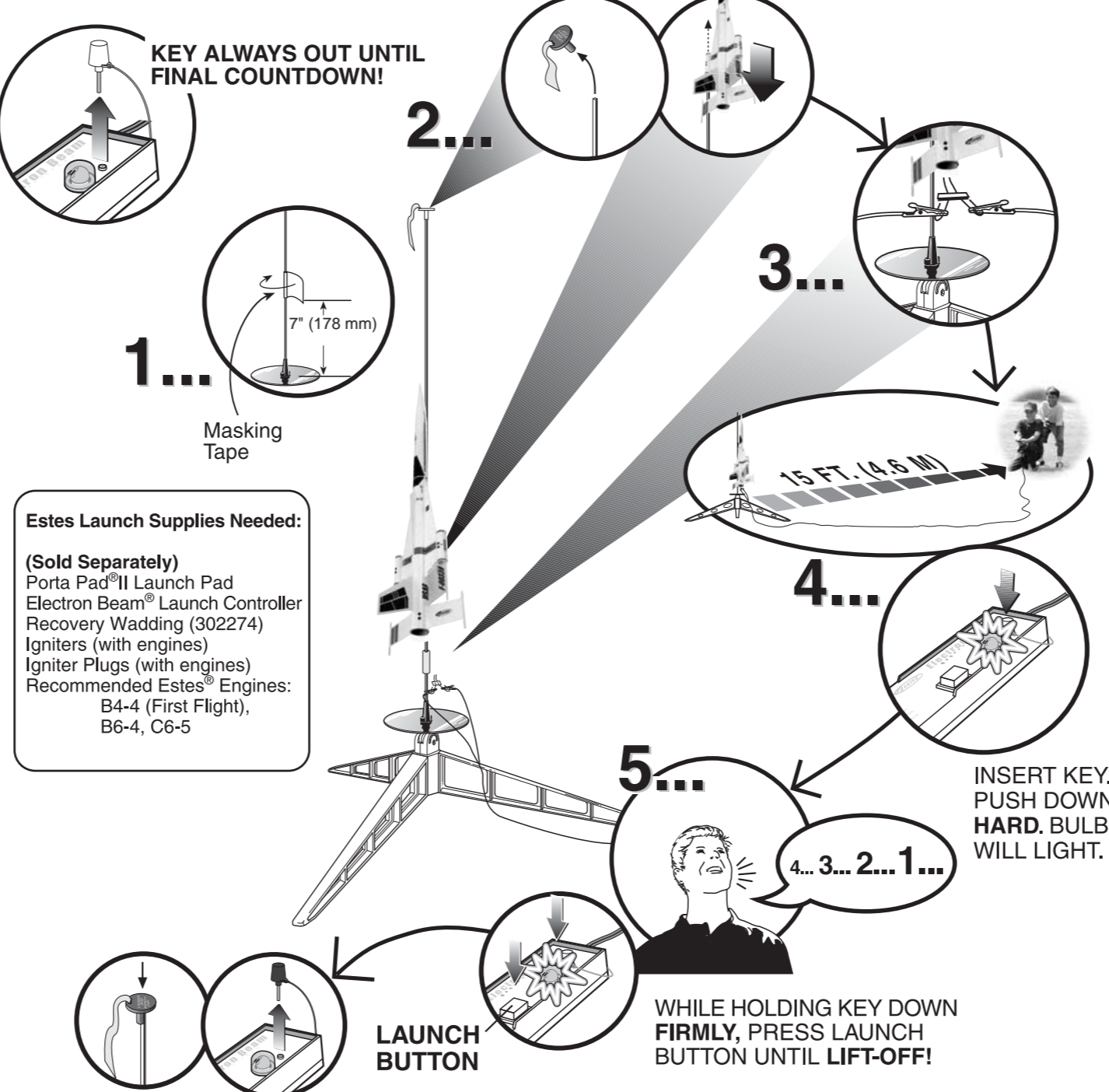
PREPARE ENGINE

WARNING: FLAMMABLE

To avoid serious injury, read instructions & NAR Safety Code included with engines.
PREPARE ENGINE ONLY WHEN YOU ARE OUTSIDE AT THE LAUNCH SITE PREPARING TO LAUNCH!
 If you do not use your prepared engine, remove the igniter before storing engine.



COUNTDOWN AND LAUNCH



PRECAUTIONS



PRE-LAUNCH CHECK

For safety, never launch a damaged rocket. Check the rocket's body, nose cone and fins. Also, check the engine mount, recovery system and launch lug. Repair any damage before launching the rocket.

FLYING YOUR ROCKET

Choose a large field (500 ft. [152 m] square) free of dry weeds and brown grass. The larger the launch area, the better your chance of recovering your rocket. Football fields and playgrounds are great. Launch only with little or no wind and good visibility.

Always follow the enclosed National Association of Rocketry (NAR) SAFETY CODE.

MISFIRES

TAKE THE KEY OUT OF THE CONTROLLER. WAIT ONE MINUTE BEFORE GOING NEAR THE ROCKET! Disconnect the igniter clips and remove the engine. Take the plug and igniter out of the engine. If the igniter has burned, it worked but did not ignite the engine because it was not touching the propellant inside the engine. Put a new igniter all the way inside the engine without bending it. Push the plug in place. Repeat the steps under Countdown and Launch.

ESTES™ SATELLITE INTERCEPTOR™

#3027

Estes-Cox Corp.
 1295 H Street, PO Box 227
 Penrose, CO 81240-0227
 Printed in CHINA

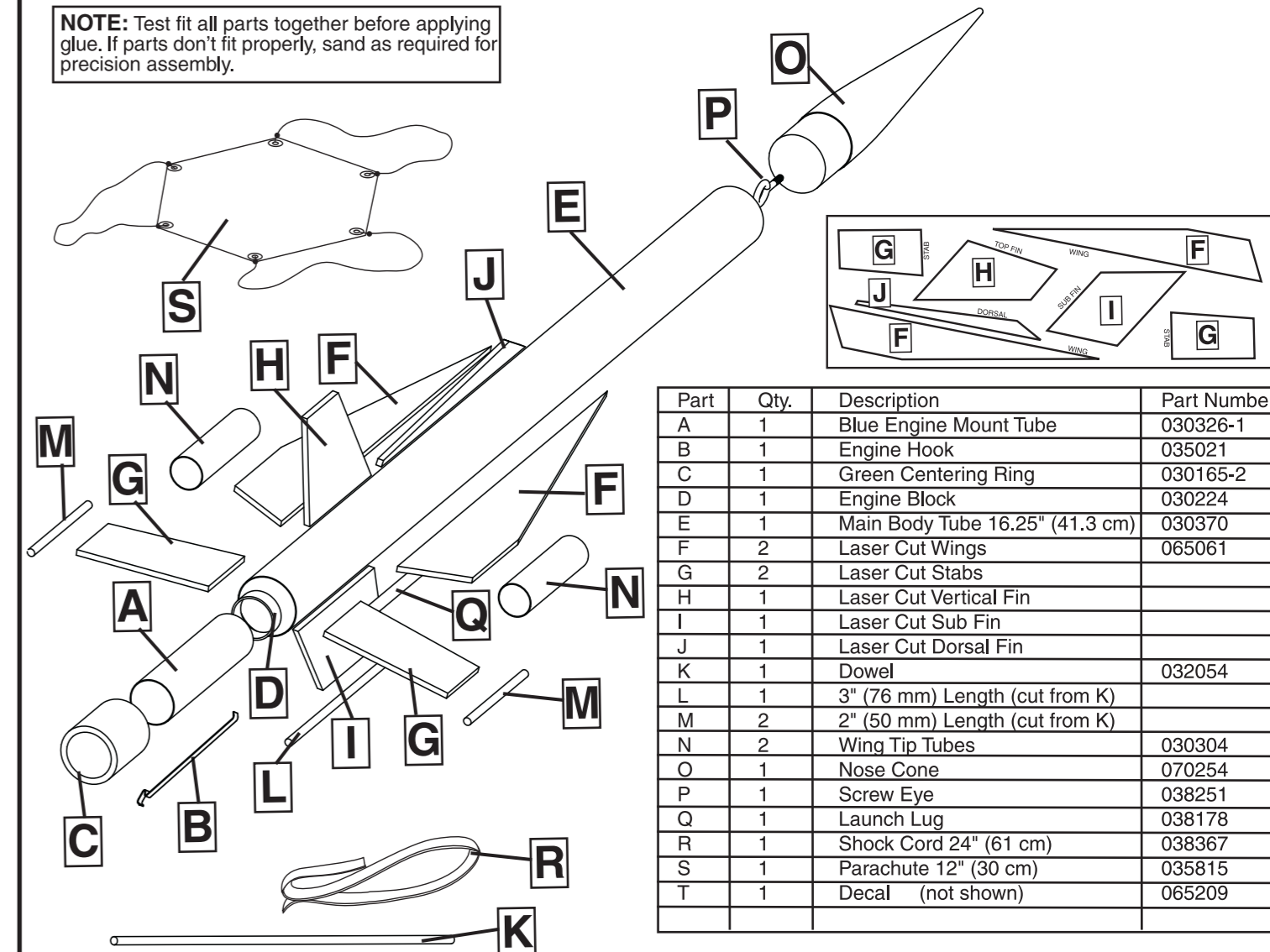
FLYING MODEL ROCKET KIT INSTRUCTIONS
 KEEP FOR FUTURE REFERENCE



ASSEMBLY TIP: Read all instructions before beginning work on your model. Make sure you have all parts and supplies.

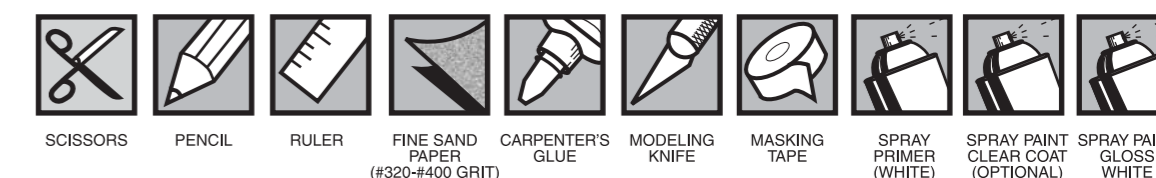
www.estesrockets.com

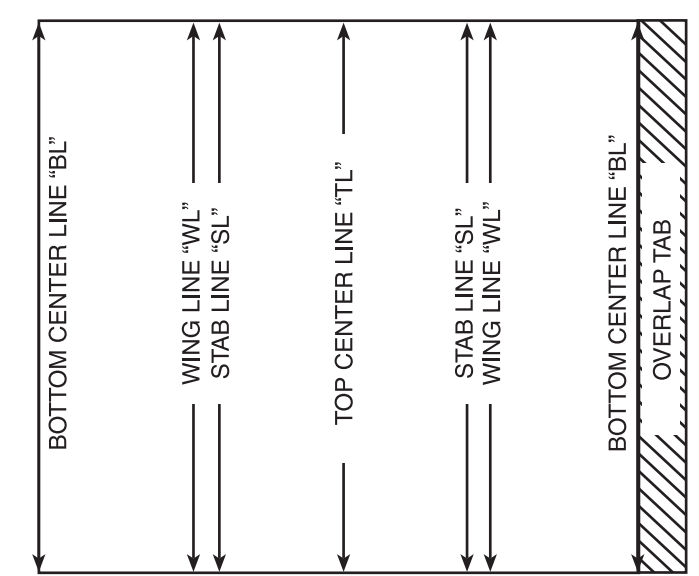
NOTE: Test fit all parts together before applying glue. If parts don't fit properly, sand as required for precision assembly.



Part	Qty.	Description	Part Number
A	1	Blue Engine Mount Tube	030326-1
B	1	Engine Hook	035021
C	1	Green Centering Ring	030165-2
D	1	Engine Block	030224
E	1	Main Body Tube 16.25" (41.3 cm)	030370
F	2	Laser Cut Wings	065061
G	2	Laser Cut Stabs	
H	1	Laser Cut Vertical Fin	
I	1	Laser Cut Sub Fin	
J	1	Laser Cut Dorsal Fin	
K	1	Dowel	032054
L	1	3" (76 mm) Length (cut from K)	
M	2	2" (50 mm) Length (cut from K)	
N	2	Wing Tip Tubes	030304
O	1	Nose Cone	070254
P	1	Screw Eye	038251
Q	1	Launch Lug	038178
R	1	Shock Cord 24" (61 cm)	038367
S	1	Parachute 12" (30 cm)	035815
T	1	Decal (not shown)	065209

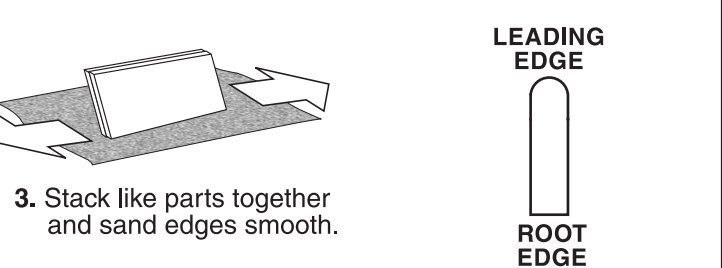
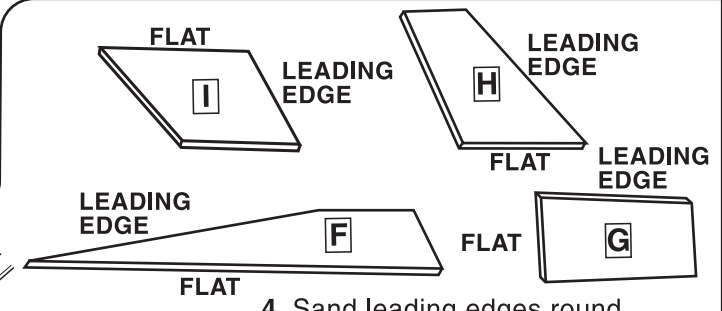
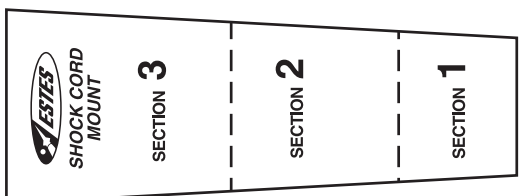
SUPPLIES In addition to the parts included in the kit you will also need:





TUBE MARKING GUIDE AND SHOCK CORD MOUNT

(Make a copy if you want to keep instructions.)



FIN PREPARATION

1. Sand both sides of balsa sheet with fine sandpaper (#320 or #400 grit).
2. Cut **F**, **G**, **H**, **I**, and **J** from sheet.
3. Stack like parts together and sand edges smooth.

ENGINE MOUNT ASSEMBLY

1. Measure and mark **A**.
2. Cut slit at mark.
3. Insert **B** in slit.
4. Slide **C** to mark. Apply glue to both sides of **C**.
5. Apply glue in end of **A**.
6. Insert **D** until it stops. Let dry.

TUBE MARKING

1. Cut tube marking guide from instructions.
2. Tape guide around **E**. Mark "SL", "WL", "BL", and "TL" with arrows.
3. Remove guide. Connect and extend "SL", "WL", "BL", and "TL". Use door frame as a straight edge.

WING ATTACHMENT

1. Measure and mark "WL". (Both sides).
2. Apply glue to root edge of **F**. Let dry 1 minute. Apply 2nd layer of glue. Attach **F** to **E** forward of mark.
3. Use fin alignment guide to check accuracy. Let dry. Repeat for remaining **F**. Let dry.

STAB ATTACHMENT

1. Apply glue to root edge of **G**. Let dry 1 minute. Apply 2nd layer of glue.
2. Position **G** even with rear of **E** angled slightly down (Check with Fin Alignment Guide). Let dry. Repeat for remaining **G**. Let dry.

VERTICAL FIN ATTACHMENT

1. Measure and mark on "TL" for **H** and **J**.
2. Apply glue to root edge of **H**. Let dry 1 minute. Apply 2nd layer of glue. Position **H** on "TL" forward of mark. Check alignment with Fin Alignment Guide. Let Dry.
3. Apply glue to root edge of **J**. Let dry 1 minute. Apply 2nd layer of glue. Position **J** on "VL" forward of mark. Let Dry.

SUB FIN ATTACHMENT

1. Measure and mark on "BL" for **I**.
2. Apply glue to root edge of **I**. Let dry 1 minute. Apply 2nd layer of glue.
3. Position **I** forward of mark. Check with Fin Alignment Guide. Let dry.

WING TUBE AND DOWEL ATTACHMENT

1. Apply glue to edge of **F**. Position **N** centered on **F**. Let dry. Repeat for attachment of opposite **N**.
2. Cut **K** into 3 pieces.
3. Apply glue to edge of **I**. Position **L** centered on **I**. Let dry.
4. Apply glue to edge of **G**. Position **M** centered on **G**. Let dry. Repeat for opposite **M**. Let dry.

ENGINE MOUNT ATTACHMENT

1. Apply ring of glue in **E**. Slide engine mount even with **E**. Make sure **E** is centered on "BL". Let dry.

LAUNCH LUG ATTACHMENT

1. Sand **Q** with fine sandpaper.
2. Apply glue to joint position under wing.
3. Position **Q** to rear of wing.

NOSE CONE ASSEMBLY

1. Screw **P** centered into **O**.
2. Check fit of **O** in **E**. Sand as required for easy insertion.



SHOCK CORD INSTALLATION

1. Cut shock cord mount from instructions.
2. Apply glue to mount. Place **R** on Section 2. Fold forward.
3. Apply glue and fold forward.
4. Squeeze tight!
5. Apply glue to shock cord mount and insert in body tube. Hold until glue sets. Let dry.

ROCKET FINISHING

NOTE: We have found Testors spray primers (Testors #2948 White Primer), Testors One Coat Lacquer spray paints (color of your choice), Testors Model Master spray paints (color of your choice) and Testors Gloss Lacquer (#1961) to be excellent for providing a long lasting and durable finish on your rocket. Always be sure to spray your models outside or in a well ventilated area.

Steps for a Quality Finish:

1. Insert shock cord into body tube and hold in place with paper.
2. Lightly sand body tube, fins and nose cone with fine sandpaper (#320 or #400 grit).
3. Apply glue fillets to fins and launch lug.
 - a. Allow glue to dry overnight.
4. Use a stick inserted into the engine tube end of the rocket for painting.
5. Hold the nose cone by the screw eye with a clip or pliers for painting.
6. We recommend a good filler/primer to be applied to the balsa fins and nose cone before painting.
7. Apply 1-2 light coats of white primer to rocket body and nose cone, lightly sanding with fine sandpaper (#320 or #400 grit) between coats.
8. Apply gloss white paint in light coats and allow paint to dry between each coat.
 - a. After final color coat, let the paint dry overnight (24 hours is best).
9. Apply waterslide decals where shown.
 - a. Cut the decal to be applied from the decal sheet, trimming close to the decal edge.
 - b. Hold the decal in warm water until decal begins to curl.



CONTINUED NEXT PAGE